

Welcome to Open House 2020-2021

We will begin
Promptly at
5pm





Hello!

I am Ms. Johnson

Welcome to 2nd grade!

You can email me at
ariene.johnson@henry.k12.ga.us

Back to School Forms

ONLINE REGISTRATION:

Parents/guardians of existing Henry County students may log into the Parent Portal to complete these paperless forms:

- 2020/2021, K-12 Student and Parent Handbook Acknowledgement
- Parent Occupational Survey
- Military Survey
- Meal Benefits (Free and Reduced Lunch Application)

In addition, existing parents

may also update or verify student information such as:

- Phone Numbers
- Email Addresses
- Emergency Contacts
- Medical Conditions
- Language Services



Instructional Materials

lpads and consumables distributed at the school



Supplies for Remote Learning

- x 2 composition notebooks
- x Pencils & pencil sharpener
- x Crayons or colored pencils
- x Earbuds or headphones
- x Stylus for writing on ipad (optional)



Ms. Johnson's Schedule

Monday/Wednesday	Tuesday/Thursday	Friday
ELA/Social Studies	Math/Science	Re-engagement/Support
7:45-8:15 Morning Meeting	7:45-8:15 Morning Meeting	7:45-8:15 Morning Meeting
8:15-8:45 Phonics	8:15-8:45 Math Warm Up: Number Talk, Estimation 180	<ul style="list-style-type: none"> ● Assessments ● Conferencing with students ● Social Emotional Games ● Tier 2 and Tier 3 program monitoring ● Office hours for parent and student questions
8:45-9:00 Read Aloud	8:45-9:00 Read Aloud	
9:00-9:45 Specials Monday: Science Lab Wednesday: PE	9:00-9:45 Specials Tuesday: PE2, every other week Thursday: Music	9:00-9:45 Art
9:50-10:20 ELA Mini Lesson	9:50-10:20 Math Mini Lesson	
10:30-11:00 Small Group 1	10:35-11:05 Small Group 1	
11:10-11:40 Small Group 2	11:10-11:40 Small Group 2	
11:50-12:25 Small Group 3	11:50-12:25 Small Group 3	
12:25-12:55 LUNCH	12:25-12:55 LUNCH	
1:00-1:30 Small Group 4 (EIP 1:00-1:45)	1:00-1:30 Small Group 4 (EIP 1:00-1:45)	
1:35-2:00 Social Studies	1:35-2:00 Science	

*** Gifted Support 1:00 -1:45 Mon-Thurs.**

Student, Parent & Teacher Expectations

Students will...

Pay attention to their learning activities

Give their best effort each day

Be courteous to each other

Parents will...

Provide a space where students can focus

Ensure devices are charged nightly

Ensure students are ready to learn and logged on to sessions on time

Teacher will...

Communicate regularly with families

Be prepared and ready for each day

Provide time for individual concerns



Learning Platforms

Class Link

One stop place for students access the learning applications

Google Classroom

This will be the hub for assignments

McGraw Hill

Phonics learning platform

HMH

Supports math, science and social studies instruction.

Discovery Education

Resource to support academic understanding through videos and other materials

Read Theory

Independent reading comprehension practice



Specials @ 9am & Google Meet Links (click each photo for link)

Tuesday- PE2 Every other week
Class code: 454ouhn



Wednesday- PE1

Class code: fykibh3



Thursday- Music

Class code: dxvyvob



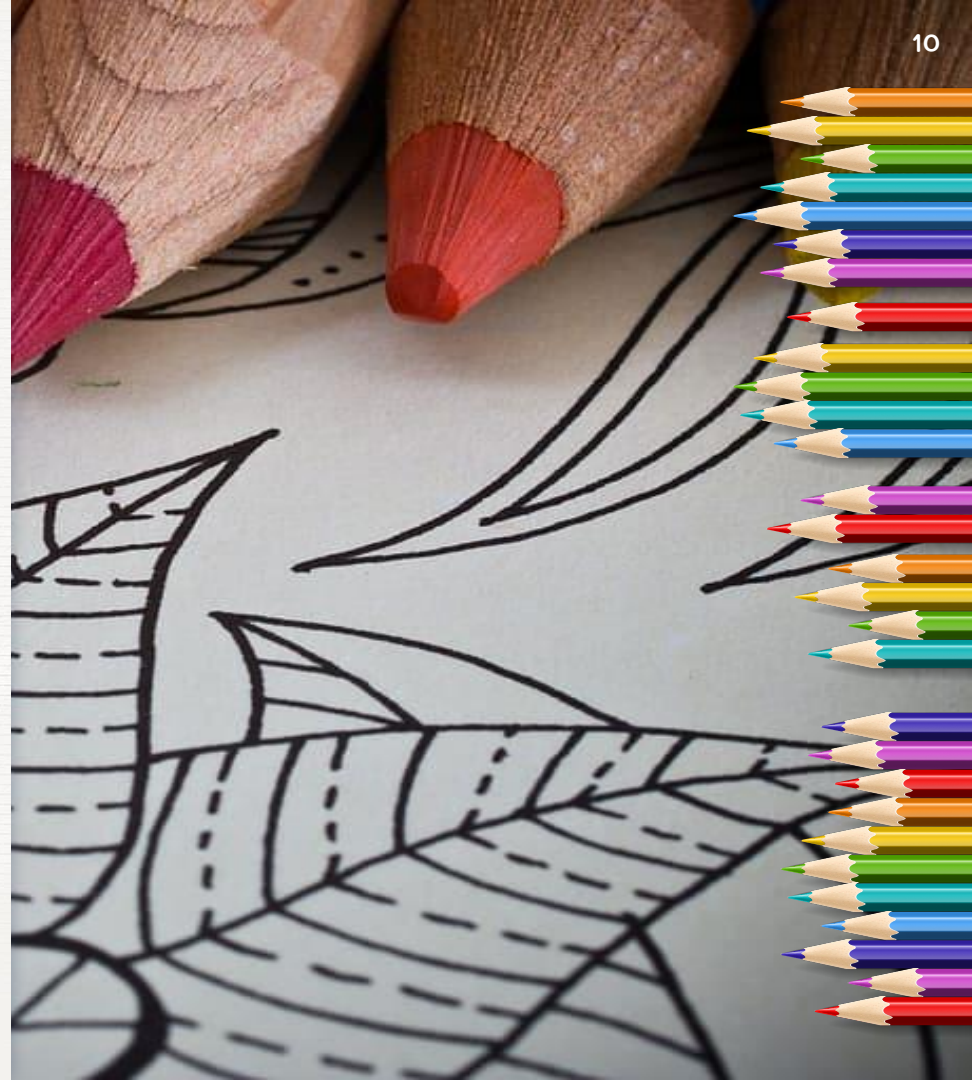
Friday- Art

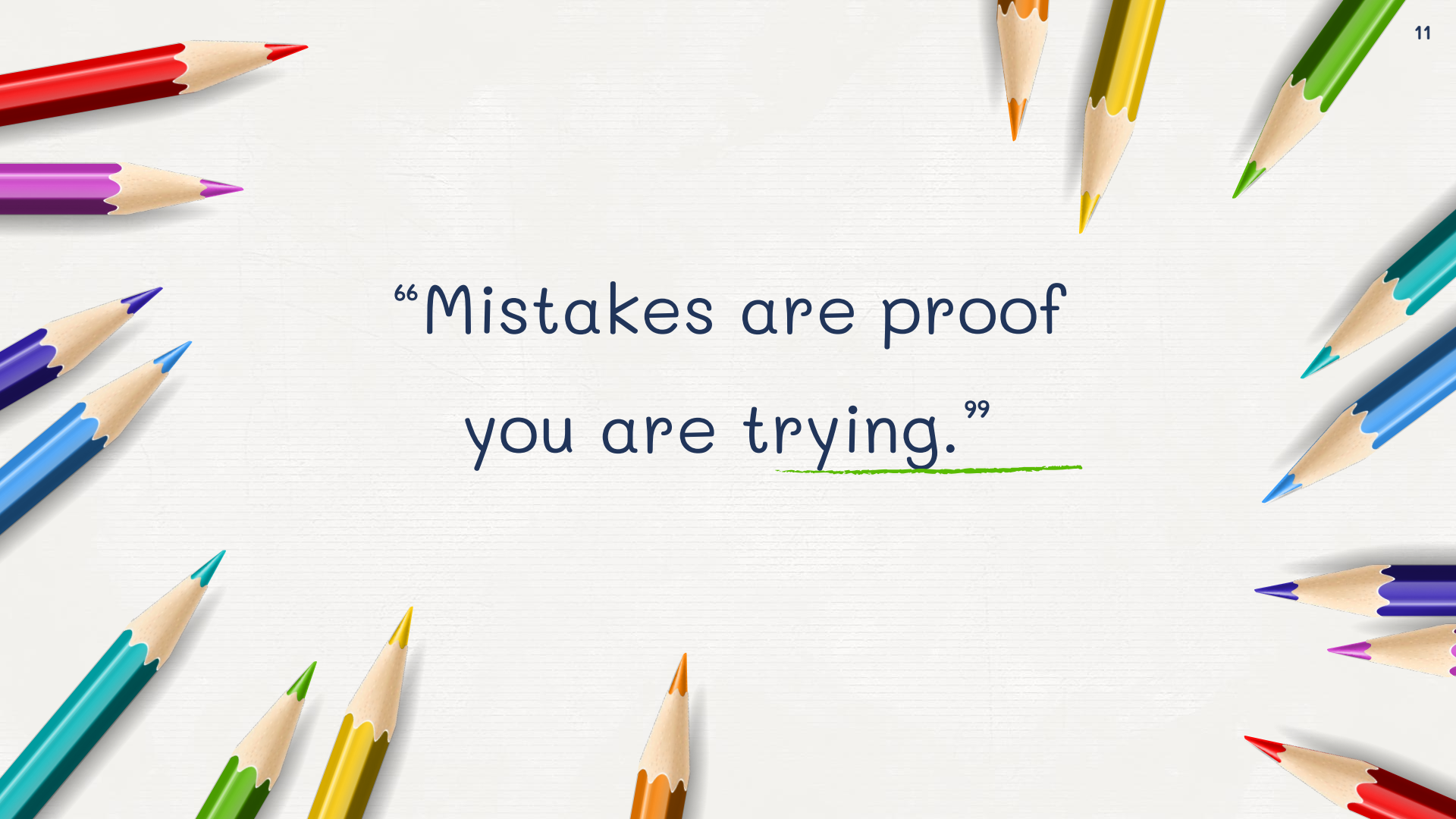
Class Code: ev7kxk5



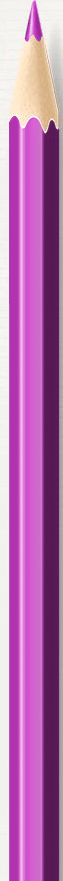
Important Reminders

- ✘ Join our google classroom
- ✘ First day of school is Monday August 17th
- ✘ Log into Infinite Campus to complete required forms
- ✘ Charge ipads
- ✘ Check out one of the google classroom sessions for parents
- ✘ Breakfast and Lunch can be picked up at DHS





“Mistakes are proof
you are trying.”



Thanks!

Any questions?

ariene.johnson@henry.k12.ga.us